



The Online Resource for the
National Collegiate Athletic Association

The Road to NCAA Hockey



Dave Smith
Canisius College



The Online Resource for the
National Collegiate Athletic Association

ACADEMICS

ATHLETICS

CULTURE



FACTORS TO CONSIDER

PROGRAM

- Winning tradition of the program
- Interest shown by coaching staff
- Graduation rate of players from specific sport
- Availability of desired major
- Academic support services
- Opportunity to play as a freshman
- Honesty of the coaching staff
- Relationship with recruiting coach
- Geographical location of the college
- College's academic standing or reputation
- Social life on and around campus
- Personality and makeup of team members
- Student population of college
- Hockey facilities
- Credentials and credibility of the Head Coach
- Attendance at Home games
- Media exposure of team and hockey program
- Conference affiliation
- Non Conference schedule



FACTORS TO CONSIDER

COACHES

- Did they develop an honest relationship from the very first contact?
- Did they demonstrate a sincere interest; making every contact as positive as possible?
- Did they stress the importance of both hockey and academics?
- Did they develop a relationship between your parents and the hockey coaches?
- Did they ensure an in-depth tour of the hockey facility during the visitation; Did they give you every opportunity to interact with as many hockey related people as possible?



FACTORS TO CONSIDER

VISITS

- Meet with a faculty member in your desired area of study
- Meet with Academic Coordinator – Meet with Career Services
- Campus Tour - Tour of Hockey Facilities - Tour of the Academic Facilities
- Meet with and interact with entire coaching staff
- Exposure and experience of the social life of the college
- One-on-one meeting with the head coach
- Interaction with present members of the team
- Meet with Medical/training personnel – discuss insurance while at college – what if season/career type injury?
- Have the opportunity to attend a class in progress
- Have the opportunity to interact with non-hockey playing students



What to look for in a Hockey Program?

- The opportunity for quality ice time.
- How you transition to college will determine your ice time. Most programs carry 5 lines of forwards, 8 defense and 3 goalies. Extra ice time comes on the Power Play and Penalty Kill.



What to look for in a Hockey Program?

- Colleges look for **impact type freshman who can play** with anyone in their league.
- Important Characteristics:
 - leadership
 - work ethic
 - hockey skills.



What to look for in a Hockey Program?

- Where **academics are taken seriously.**
- The resources and the people on campus to ensure success if YOU want it.
- Computers, tutors, study table, writing labs, math labs, and scheduling help are all available to you if requested.



What to look for in a Hockey Program?

- **Strength and Conditioning.** A staff that monitors student-athletes year round.
- In-season programs
- Off-season programs
- increase and improve all areas of physical fitness specific to ice hockey.



What to look for in a Hockey Program?

- Coaches that are **fully committed to the whole person.**
- A staff that is committed to ensuring that you develop your game, your character and your personality, on and off the ice to ensure success beyond college.



What to look for in a Hockey Program?

- **Location**
- Your family and friends should have the opportunity to see you play NCAA Division One hockey.



What to look for in a Hockey Program?

- Coaches that believe in YOU.
- Belief that your **character, your skills and your commitment** to being a complete player and person are the building blocks for that programs success.
- Each and every student-athlete will have a positive impact on the hockey program.



The Online Resource for the
National Collegiate Athletic Association

FINANCIAL



Financial Package

Academics

Transcript/
SAT/ACT

Family Need

FAFSA

Athletics

Coach



ATHLETIC SCHOLARSHIPS

An Athletic Scholarship may cover up to the cost of tuition, fees, room, board and books for a single semester. Scholarships are renewable on an annual basis, and notification of renewal, reduction or non-renewal will be postmarked no later than July 1. If an athlete becomes ill or injured due to athletics, the grant cannot be cancelled or reduced during that academic year.

The policies for renewal of grants-in-aid are as follows:

1. Under normal circumstances, renewal of financial aid for subsequent semesters will be granted, but NCAA rules forbid commitment beyond one year.
2. You may receive an athletics scholarship for no more than five years out of six.
3. You may not be granted a renewal of your athletics scholarship if you demonstrate:
 - * Inability to reach reasonable athletic performance goals.
 - * Render yourself ineligible for intercollegiate competition.
 - * Engage in serious misconduct warranting disciplinary action.
 - * Incompatibility with coaching staff.
 - * Voluntary withdraw from the sport at any time for personal reasons.
4. You will receive a letter from the Financial Aid Office postmarked by July 1 if your scholarship will not be renewed.
5. If you disagree with the decision to reduce or cancel your scholarship, you can file an appeal by submitting a request for an appeals hearing within 14 days of reduction or non-renewal.



The Online Resource for the
National Collegiate Athletic Association

PROFESSIONAL HOCKEY

NHL – AHL – ECHL – UHL – CHL – EUROPE - OTHER

NCAA

- 6 CONFERENCES
- DIVISION I or III

MAJOR JUNIOR

Tier 2 Junior Hockey

- OPJHL - USHL – NAHL – JR B
-

High Level Hockey

- AAA Midget – HS Hockey



Estimated Probability of Competing in Athletics Beyond the High School Interscholastic Level

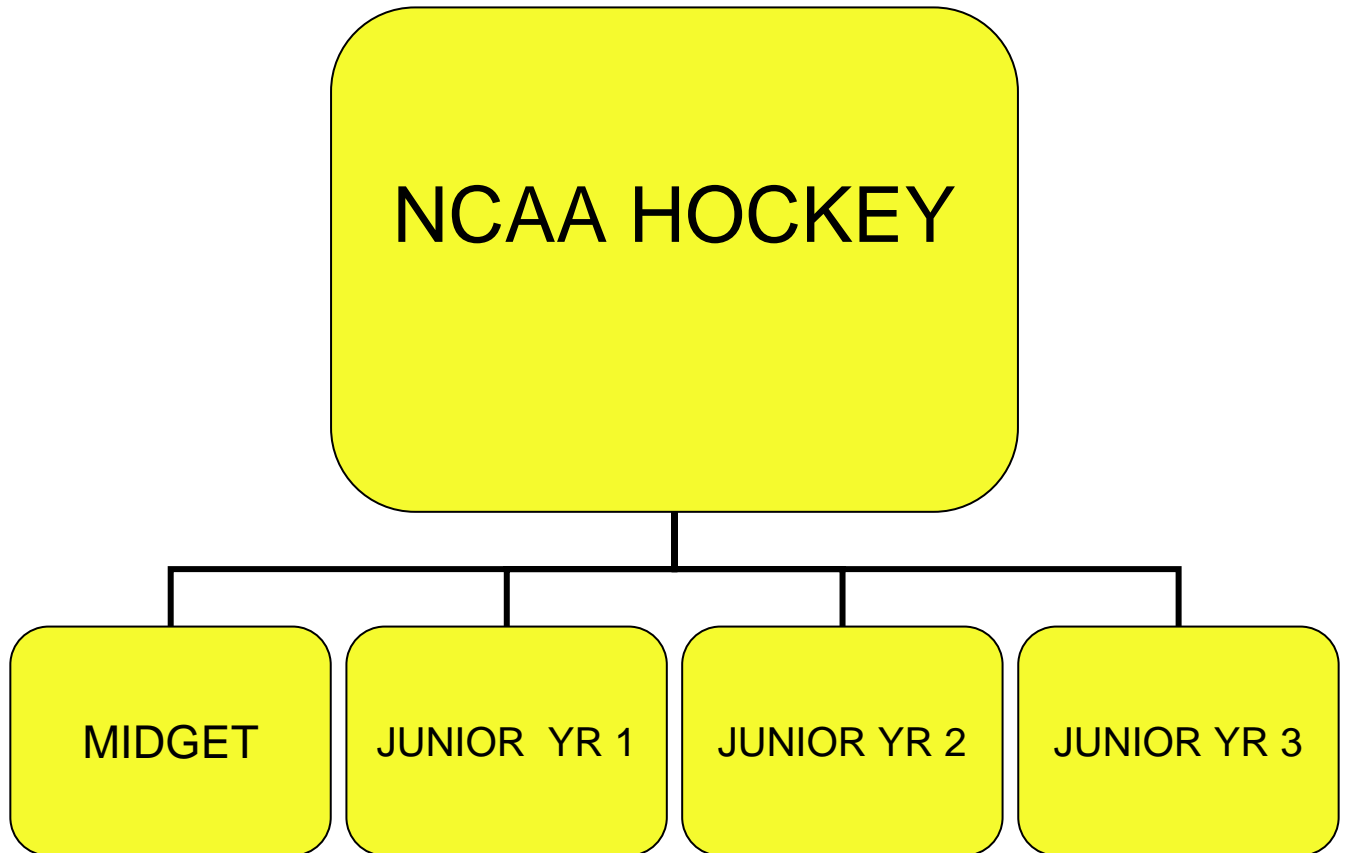
Ice Hockey



Student-Athletes	<u>Men's Ice Hockey</u>
High School Student-Athletes	29,900
High School Senior Student-Athletes	8,500
NCAA Student-Athletes	3,700
NCAA Freshman Roster Positions	1,100
NCAA Senior Student-Athletes	800
NCAA Student-Athletes Drafted	33
Percent High School to NCAA	12.9
Percent NCAA to Professional	4.1
Percent High School to Professional	0.4



Timeline to NCAA Division I Hockey





"Winning is not a
sometime thing; It is an
ALL THE TIME THING.

You don't win once in a
while, you don't do things
right once in a while, you
do them right ALL THE
TIME.

Winning is a habit."





Limitations on Official Visit

A prospect may not make more than five expense paid visits to NCAA Division I and II member institutions, regardless of the number of sports in which the prospect is involved.

Unofficial (Non-Paid) Visit

A prospect may visit an institution's campus at the prospect's own expense an unlimited number of times and may make an unofficial visit before the prospect's senior year in high school. [

Video/Audio Materials

An institution may not produce video/audio materials to show or send to a prospect (or the prospect's coach), except for the following:

Recruiting Materials

Institutions may not send prospects recruiting materials (including general correspondence related to athletics) before September 1 of the prospect's junior year in high school. An institution may provide only the following printed materials to prospects and to prospects' coaches:

Permissible Number of Contacts and Evaluations

Each institution shall be limited to seven recruiting opportunities per prospect, which may include three in-person, off-campus recruiting contacts per prospect



Certification of NCAA Division I and II amateurism rules

- The certification will not cover all areas of NCAA Bylaw 12. Institutions will be responsible for determining the amateurism status of prospective student-athletes for the areas of the amateurism bylaws not covered by the Amateurism Certification Clearinghouse. In addition, institutions will be responsible for certifying compliance for all amateurism bylaws during the time period between the student-athlete's amateurism certification and his or her initial enrollment at an NCAA institution.
- The scope of the Amateurism Certification Clearinghouse's review may include:
 - Contracts with a professional team.
 - Salary for participating in athletics.
 - Prize money above actual and necessary expenses.
 - Play with professionals.
 - Educational expenses from an individual (or entity) other than the prospect's parents.
 - Preferential treatment based on athletics participation or reputation.
 - Tryouts, practice or competition with a professional team.
 - Benefits from an agent or prospective agent.
 - Agreement to be represented by an agent.
 - 21st birthday rule (Division I)
 - Tennis and swimming and diving rule (Division I)
 - Organized-competition rule (Division II)



WHAT'S NEXT?

- Complete and fax questionnaire to Hockey Office
- Fax high school transcripts to Hockey Office
- Fax ACT/SAT results to Hockey Office
- Complete and fax Financial Aid Estimator to Hockey Office
- Apply for admission online
- Register with the NCAA Clearinghouse at www.ncaaclearinghouse.net
- Remain in good academic standing
- Correspond with coaching staff
- Continue playing well
- Schedule additional visits to School (if necessary)



- WWW.NCAA.ORG
 - **Guide for the College-Bound Student-Athlete**
 - **General Information on the NCAA Clearinghouse Website:**
 - **Links to the NCAA website.**
 - **Core-course listings for high schools.**
 - **Online version of NCAA Guide for the College-Bound Student-Athlete.**
 - **Online information about Division I and Division II initial-eligibility requirements.**
 - **Online Frequently Asked Questions (FAQs).**

- WWW.USCHO.COM